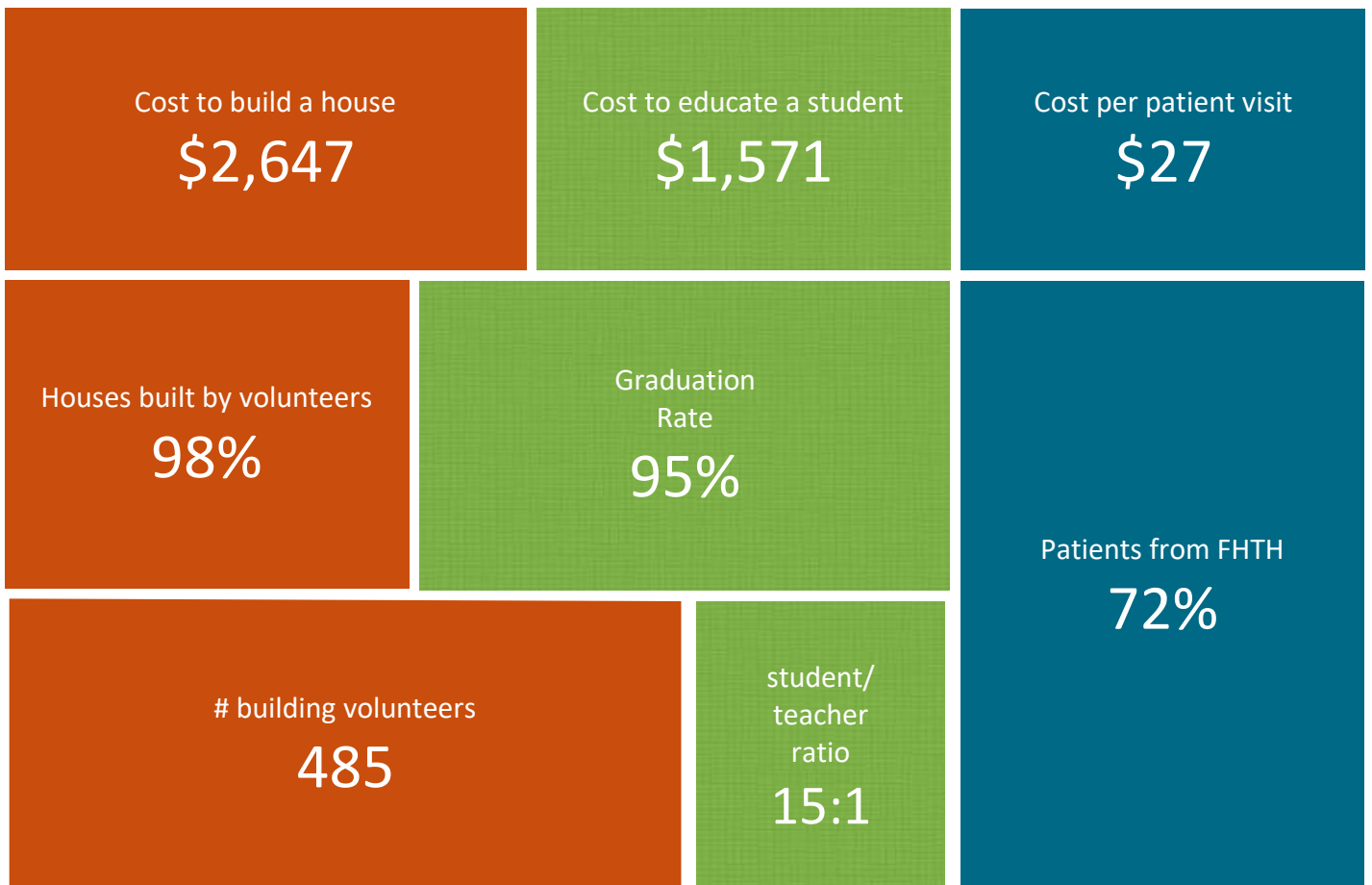


From Houses to Homes 2019 Dashboard



Houses

Houses built=number of houses built this period.

Built since inception= number of houses built back to the first year of operations, 2005

General

Overhead %
—> based on USA overhead

School

Students enrolled=
total number of students enrolled at the start of the year

Clinic

Patients seen at Clinic= total number of visits to the clinic

Glossary

Guatemalans provided a home last year= number of people living in new homes constructed by FHTH

% sponsored kids= the number of children who were sponsored at the end of the school year.

% patients seeing GP/dentist/gynecologist= for the average group of 100 visits, the number seeing a GP, dentist or gynecologist.

Cost to build a house= the total dollars spent on supporting house building divided by the number of houses for the same period. Overhead included.

Cost to educate a student= the total dollars spent supporting our school divided by the total number of students attending. Overhead incl.

Cost per patient visit= the total dollars spent supporting our clinic divided by the total number of visits to the clinic that period. Overhead included.

Houses built by volunteers= the percent of houses where volunteers helped build.

Graduation rate= % of students moving ahead to the next year

Patients from FHTH=The % of clinic visitors that came from our school and the homes we built vs off the street.

building volunteers= the number of volunteers engaged in building homes

student/
teacher
ratio=the avg
of students
per teacher
(x-admin)